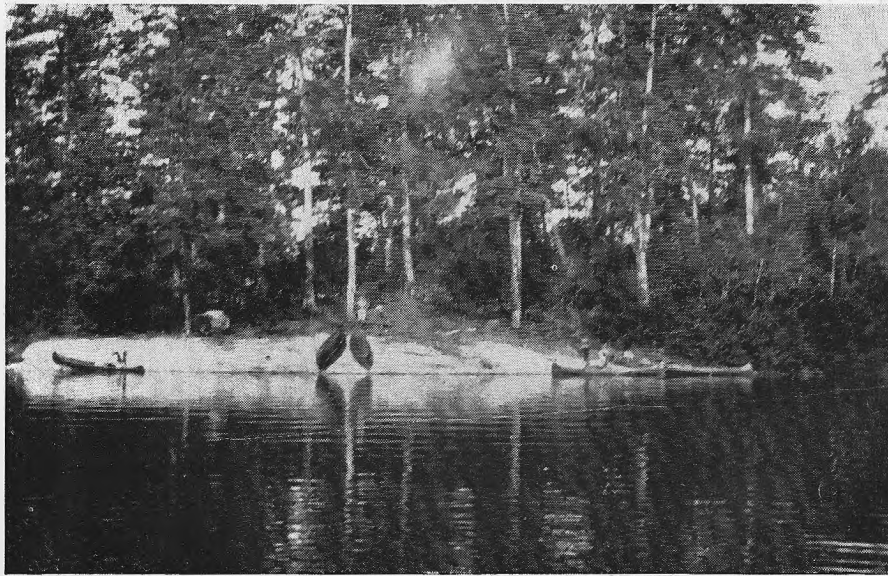


1949 ✓  
**ADVENTURE!**

*that's the*  
**WILDERNESS CANOE TRAILS**



*26th Season*

**CHARLES L. SOMMERS CANOE BASE**

**Boy Scouts of America - Region Ten**

**238 Minnesota Bldg., St. Paul 1, Minn.**

## THE CANOE COUNTRY

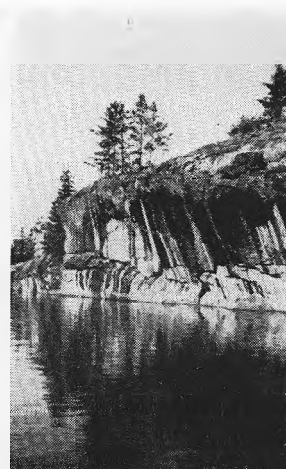
### VOYAGEUR'S HIGHWAY

Two hundred and sixteen years ago, the records show, a Frenchman named De Noyon spent a winter on Rainy Lake having traveled westward along what is now the Canadian Border.

In 1731, the French-Canadian Verendrye was on his way westward from Grand Portage to Rainy Lake with his seventeen-year-old son and a small group of men. At Rainy Lake, he established Fort St. Pierre.

Thus, more than two hundred years ago, the Grand Portage Canoe Route began to be used by brigades of trading canoes. Picture to yourself the scene as these men caught their first view of pine edged lakes in such numbers as they could scarcely have believed possible. These were the first of thousands of white men whose feet were to pack down the soil of portage paths so firmly that the trails to this day are clearly visible in otherwise trackless wilderness.

Today, over two hundred years later, the region is still a land for young men, for pioneers, for those who love hardihood, self-reliance and an adventure in an historic setting. Still unsoiled, still untouched by man, is this vast wilderness of millions of acres encompassed in the Superior National Forest of Minnesota, and in the Quetico Provincial Park of Canada. This region has been set aside as a camping and canoeing reservation for generations to come.



### THE CANOE BASE

In the heart of this huge area is Moose Lake, 22 miles northeast of Ely, Minnesota, which was selected as the site for the Canoe Base, because of its strategic location. From this point you have access to 15,000 lakes in the Quetico-Superior Region—small lakes, most of them, and close together, full of fish. An infinite variety of routes are possible from this starting point, and you will have no necessity for back tracking. Long trips, short trips, fishing trips, explorations—all are possible here.

At the Base, you are outfitted with canoes and special camping gear needed for your trip. Here the trip is planned, with an experienced adult guide to help you. Menus are planned and supplies secured from the camp store. Here you spend your first night working on plans, getting a bit of instruction in paddling, packing, portaging, ready to shove off the next day on the "big adventure."



---

ADVENTURE IN '49!

**REGION TEN**  
**WILDERNESS CANOE TRAILS**  
 SCALE 1" = 7 MILES  
 SOME OF THE ROUTES }  
 INTERNATIONAL BORDER

Map details include:  
 - Trails: Solid lines with various labels (e.g., Tanner L., William L., Kahshahpi L., Agnes Lake, McEwen Lake, Cypress Lake, Cacaguic L., Cobemichigama Lake, Snow Bank Lake, Desapoint L., Kawshichong L., Phoebe L., Kawshiw L., 1945 A.C.).  
 - International Border: Dashed line.  
 - Quetico-Saguenay National Park: Solid line.  
 - Other features: Lakes (e.g., Quetico Lake, Robin L., Jean L., William L., Kahshahpi L., Agnes Lake, McEwen Lake, Cypress Lake, Cacaguic L., Cobemichigama Lake, Snow Bank Lake, Desapoint L., Kawshichong L., Phoebe L., Kawshiw L., 1945 A.C.), rivers (e.g., Keweenaw R., Keweenaw R., Keweenaw R.), and other geographical features (e.g., Echo L., Wet L., Jasper L., Cross L., Meadow L., Birch L., Sunday L., Carp L., Ensign L., White portage, Inna L., Thomas L., Polly L., Kewshichong L., Phoebe L., Kawshiw L., 1945 A.C.).

This map shows just a small section of the Canoe country surrounding the Canoe Base on Moose Lake. Ely and Winton are in the lower left-hand corner. Winton is at the end of the Railway, the Canoe Base is at the end of the Fernberg Road. The heavy line along the Canadian Border is the ancient most traveled route of the fur traders, the "Highway of the Voyageurs".

## THE ADVENTURE CAMP FOR SENIOR SCOUTS

The Wilderness Canoe Trails are designed as an advanced camping experience for Senior Scouts, young men of fifteen years and older. The Region has developed these trips as a progressive camping experience complimenting the Local Council Camps. Like Philmont in New Mexico, it is rugged camping—not intended for the tenderfoot.

### Chartered or Council-Organized Units Recommended

The trips are ideal for a Senior Unit, or a group of Senior Scouts from a Troop, particularly if accompanied by their own chartered leader. The best trips over the years have been chartered units, with their own leader, traveling together.

The next best plan is for the Council to develop one or more crews, of from eight to twelve each. An adult leader for each crew is required.

A number of Councils have made up a party of central camp staff members who have taken a trip at the close of the Council summer camp.



### HOW DO YOU GET TO THE CANOE BASE?

The most desirable method of travel is by chartered bus, commercial bus, train or private car. Do not forget your tour permit.

By car or chartered bus, we recommend the route through Duluth, Minnesota, then U. S. Highway No. 61 to Ilgin City on the North Shore of Lake Superior. Beyond Ilgin City, turn left onto State Highway No. 1 to Ely, Minnesota.

Four miles northeast of Ely, at Winton, Minn., report to the U. S. Immigration and Customs Office, then take the Fernberg Road, going east, at the south end of the village. Follow the trail signs to the Base, about 18 miles from Winton. Plan to arrive at the Base between 2:00 P.M. and 4:00 P.M. the day your trip is scheduled to start.

On the return trip, take the route from Ely to Virginia, Minnesota, and side trips to see the world's largest open-pit iron ore mines at Virginia and Hibbing.



### Transportation from Ely to the Base

If you arrive in Ely by bus or train, we will meet you in Ely, provided you advise us as to the time of your arrival. A charge of \$1.00 covers the round trip from Ely and return.

---

JOIN THE 49ERS FOR ADVENTURE!

## ADVENTURING FOR SENIOR SCOUTS

### WHAT EQUIPMENT DOES THE CANOE BASE FURNISH?

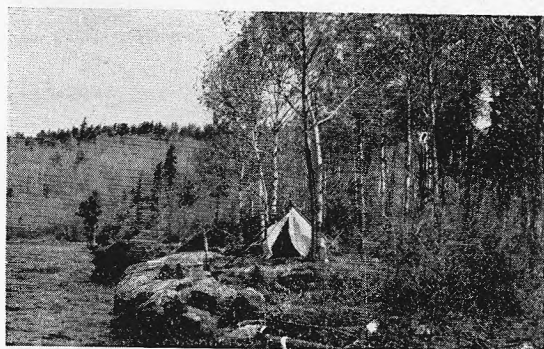
The Canoe Base supplies your Canoes, Paddles, Maps, Tents, Tarps, Packs, Cooking Gear, Axes, all food for the Trip and other items. All this gear is kept in top condition.

#### What Equipment Shall I Bring? Necessary

- ☐ Plate, knife, fork, spoon, and cup for trail use.
- ☐ Mosquito dope.
- ☐ Personal First Aid Kit.
- ☐ Raincoat or poncho.
- ☐ Jacket or sweater, or both.
- ☐ Wool shirt.
- ☐ Hat, sunshade, or dark glasses.
- ☐ Shoes—not oxfords, for the trail.
- ☐ Moccasins or sneakers for in camp use.
- ☐ Heavy socks, 3 or 4 pair.
- ☐ Blankets—2 Hudson Bay, or 4 regular, or sleeping bag.
- ☐ Towels, washcloth, toilet articles, floating soap, etc.
- ☐ Handkerchiefs.
- ☐ Kneeling pads (make them).
- ☐ Guidebook.
- ☐ Old Clothes, one change. Avoid sunburn with long pants and long-sleeved shirts.
- ☐ Pack for personal gear.
- ☐ Compass.
- ☐ PHYSICAL EXAMINATION FORM—FILLED IN COMPLETELY.

#### Optional

- ☐ Flashlight.
- ☐ Uniform for traveling.
- ☐ Camera and film.
- ☐ Waterproof match container.
- ☐ Swim Trunks.
- ☐ Scout Knife or sheath knife.



#### Fishing Licenses

Minnesota: Men, 16 and over need a license if fishing will be done in Minnesota. Resident license must be purchased in the County in which you reside, cost, \$1.00. Non-resident license can be purchased in Ely, Minnesota, for \$3.00.

Canada: For those 21 years or over, the license is \$5.50. For those under 21, the cost is \$2.00, if purchased 10 licenses at one time.

P. S.—The fishing surely is good!

## 1949 TRIPS

Trip 1—July 10-17— 7 days  
 Trip 2—July 12-22—10 days  
 Trip 3—July 17-27—10 days  
 Trip 4—July 24-31— 7 days  
 Trip 5—July 27-3— 7 days  
 Trip 6—July 31-10—10 days  
 Trip 7—Aug. 3-13—10 days  
 Trip 8—Aug. 10-20—10 days  
 Trip 9—Aug. 14-24—10 days  
 Trip 10—Aug. 21-28— 7 days

### FEES

Trips 1, 4, 5, 10 —\$20.00

Trips 2, 3, 6, 7, 8, 9—\$27.50

Even though the cost of almost everything has gone up these past few years, the cost of making a Canoe Trip has remained the same. This has been made possible by increasing attendance and better facilities in caring for equipment. Though the fees remain the same, the food on the Trail has improved year by year.

### LIMITED TO SIXTY IN ANY ONE TRIP

It is recommended that you organize into crews of from 8 to 12. This means that the average trip total will be about sixty persons or six crews.

Long experience has shown that 8 to 12 is the best size because of the absence of large camp-sites, ease of portages, mobility of canoes and for cooking.




---

COME ALONG! - ADVENTURE!



## JOIN THE VOYAGEURS OF '49

---

### HOW TO REGISTER

Your Local Council has already reserved space in one of the above trips, and has no doubt informed you of the selection.

If you or your outfit is interested in making a real Canoe Trip, write to your Local Council Office for information or mail in the enclosed application form.

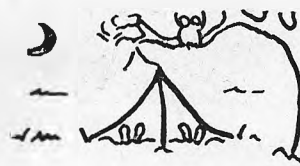
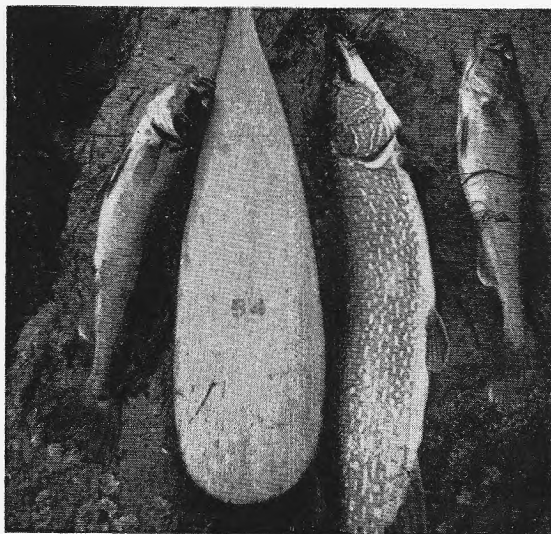


A \$5.00 registration fee for each person must be sent in if you wish space held for you. This fee is non-refundable unless someone will take your space for you. Your registration fee applies on the cost of your trip.

Remember to write to your Local Council Office, not to Region Ten.

### THE 1949 GUIDE STAFF

As in the past three seasons your Guide Staff will be made up of adults who are experienced canoe men and expert campers. These men know the country, its history and its ways. Their job is to see to it that you do have a wonderful time. They are your friends in need and do not take from you the pleasure of finding your way through the lakes, and all the other pleasures of this sort of trip.



1947



### THE CANOE TRAILS EMBLEM

Here is the emblem presented to all who make a trip. It will be yours to bring back memories of the experience of your life.

You have heard of the strange call of the Northland . . . here it is . . . for you.

