

BOY SCOUTS OF AMERICA



REGION

TEN

HIGH ADVENTURE

Offering These Adventure Trips
To All Scouts This Summer!

1938

Council Camps - - -	June - Sept.
Camp School - - -	May 28-30
Aquatic School - - -	June 15-25
Sea Scout Rendezvous	June 18-19
Canoe Trips - - - -	June - Sept.
University of Scouting	July 24-31
Eagle Trail - - - -	Aug. 1 - 10
Pack Saddle Trip - -	Aug. 7 - 14
Sea Scout Cruise - -	Aug. 14-21
Minnesota State Fair -	Sept. 3 - 10
South Dakota State Fair	Sept. 10-17

★

Plan on one of these trips this summer!
Write your Scout Office, or:

REGION TEN OFFICE

Boy Scouts of America

1124 MINNESOTA BUILDING
ST. PAUL, MINNESOTA



CANOE TRAILS TO ADVENTURE

July - August

To those seeking "High Adventure", a Canoe Trip holds endless possibilities. Region Ten's Canoe Trails, traversing endless miles of lakes and rivers thru the northern wilderness, offer thrilling adventure on the ancient routes of the fur brigades just as they were traveled by the Voyageurs of the Hudson Bay and Northwest Companies more than two hundred years ago.

A Canoe Trip over these routes is America's last challenge to the pioneer spirit. Lazy paddling along the tree-shadowed shore of a peaceful lake, the breath-taking dash thru "white water", the portage trails, worn smooth by the moccasined feet of generations of Indians and Voyageurs, the evening campfire with trout and bacon sizzling over the fire, and the soft bed of fragrant balsam boughs, all help to make these trips long to be remembered.

Region Ten provides competent instructors, the best of canoes, water-proof tents, up-to-date cooking outfits, individual ponchos and packsacks; in fact, the most experienced leadership and the best equipment which can be found for such trips.

Leadership: C. S. Chase, veteran of the Canoe Trails and Deputy Regional Executive, will again direct the 1938 trips.

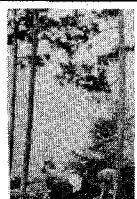
He has conducted over eighty trips without a major accident. Assisting him will be an able staff, all experts, and dependable Scout leaders. Latest methods of handling commissary and wilderness menus and cooking are employed.

Schedule of Regular Region Ten Trips: This year trips will be conducted for Local Council parties of eight or more from July 10th to September 3rd. Almost any route desired by the group will be followed. Before making application, check with Council officials for dates they have selected. A great variety of special trips are possible and are open to Councils.

Individuals: If your Local Council is not planning a trip this year or you cannot go on their dates, you may go with other Scout parties made up at the Base Camp.

Trip No.	Dates	Trip No.	Dates
1	July 10-16	5	Aug. 7-13
2	July 17-23	6	Aug. 14-20
3	July 24-30	7	Aug. 21-27
4	July 31-Aug. 6	8	Aug. 28-Sept. 3

Cost: Regular trips \$11.50 each. Two weeks, \$20.00. Fee includes leadership, equipment, supplies, and supper and lodging on Sunday and breakfast on Monday at Hibbard's Lodge before shoving off. Reservations must be made through your Council on the blank provided.





Requirements:

1. Minimum Rank - First Class.
2. Minimum Age - 15 Years. Weight and height meeting physical standard for age.
3. Adequate Local Council and Troop Camping record.
4. Clear registration as a Scout or Scouter.
5. Council, Troop, and Parental approval. Subject to final approval and acceptance by Canoe Trip Director.
6. Standard Health History. Secure a health blank from your Council Office and have it completely filled out not earlier than six days before the trip and signed by a physician and your parents. Applicants for trips will be rejected without this record; no exceptions to this rule. Deliver your blank to the Canoe Trip Director upon arrival. Final check-up at Base Camp.

Scouters must have equivalent of above requirements.

Arrival at Base Camp: Canoeists will arrive not later than 4:00 PM, Sunday, on the day your trip is scheduled to start. Inquire at Ely for Hibbard's Lodge, located on Moose Lake, 22 miles northeast of Ely, Minnesota. The road is well marked. The night is spent here in order that final instructions may be given, physical check-up made, and equipment issued. Canoeists must be on hand on time (no exceptions to this rule). Shove off early Monday morning and return Saturday morning. Canoeists report to Director in charge at Base. You may leave your car, valuables, civies, etc. safely while on the trip. All of this service is a part of the trip, including lodging and meals from 4:00 PM, Sunday, until the start of the trip.

TRAVEL TO CANOE TRIPS FROM THE TWIN CITIES


This year for the first time arrangements have been made (in the interests of safety and convenience) for travel to and from Canoe Trips. One of the problems in the past has been the task of getting up to the Base of the trips, and the Committee has sought a way to assist interested Scouts and Scouters in this problem.

Now it's solved. Edward Pixley, Bear River, Minnesota, who owns and operates a school bus, has agreed to make the trip from the Twin Cities to the Base at the round-trip rate, including meals, for \$5.00. Reservations must be made in writing to Edward Pixley, c/o Region Ten Office, 1124 Minnesota Building, St. Paul.

- DO NOT HITCH-HIKE -

CANOE PADDLE AWARDS:

Awards: Each Scout taking a trip will receive the "Canoe Trail" medallion for use on the Scout uniform. In addition there are Bronze, Gold, and Silver paddle awards for careful attention to camping fundamentals, use of a camera, and careful observation. Application blanks for these awards are presented to each camper at the Base Camp.





AQUATIC SCHOOL

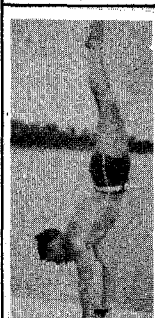
June 15th to 25th



The National Aquatic School conducted by the American Red Cross this year should be considered a real opportunity for training camp waterfront directors, instructors, and life guards.

This year the School will be located at Camp Ihdakapi at Loretto, Minnesota. The camp is reached by Highway #12 to Maple Plain, turn north to Loretto, which is about 25 miles west of Minneapolis.

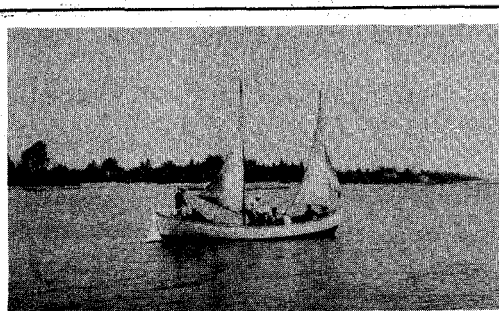
All Scouters welcome. Minimum age, 18 years.



Campers report to the registrar during the afternoon of June 14th. Registration will be made with the Director of First Aid and Life Saving Service, Midwestern Area, American Red Cross, 1709 Washington Ave., St. Louis, Missouri. The usual fee of \$30.00 for the ten days will be charged.

The leadership will be under the direction of the National Organization of the American Red Cross, and our good friend, Bob Eaton, of the Midwestern Area.

The high quality of the instruction work of the American Red Cross needs no sales talk to the Scouting field. Instruction this year is in First Aid, Swimming, Life Saving, and Small Craft operation.



- STANDARD EQUIPMENT LIST FOR ALL EVENTS -

2 Hudson's Bay blankets or 4 thicknesses of ordinary blankets -
Scout Hat - Scout Shirt - Khaki long trousers, cotton or wool - Sweater,
mackinaw, lumberjack, or pea jacket - Suit light underwear - 2 pair wool
socks - Old tennis shoes or oxfords - Shoes or boots - 3 handkerchiefs -
Scout Neckerschief - Toilet Soap - 2 Towels - Comb - Small Mirror - Sewing
Kit - Knife, fork, and spoon - Cup (not aluminum as it conducts heat) -
Canvas tarp for bed roll - Scout knife - First Aid kit, small and compact,
iodine, wide adhesive tape, bandages, and dope for sunburn - Slicker -
Dish Towel - Small flash light.



REGION TEN CAMP SCHOOL

May 28-29-30

Region Ten is offering a spring Camp School this year for training Camp Staff and other Scouters related to Camping. Minimum age, 18 years. This course will cover various phases of camping fundamentals and skills.

The School will be held at Camp Tonkawa, the Minneapolis Area Camp, where ample facilities are available for such a project. May 28 to May 30 has been chosen as the date, taking advantage of the week-end holiday afforded by Memorial Day on Monday. Conference will begin at 12 noon with lunch on Saturday, May 28, and will close after lunch, Monday, May 30. The fee will be \$3.50 which is purely on a cost basis covering food, lodging, and study material.

John Tilden, Minneapolis Executive, will be Host; Carl Chase of the Region Ten Staff will be course director; K. G. Bentz, Advisor; George Boardman of the Minneapolis Area will be in charge of physical arrangements. A group of able and capable Executives of the Region will provide the Instruction Staff.

Mr. Klusman, Assistant National Camp Director of the National Staff, Boy Scouts of America, will be on hand to aid with the instruction.

Each person attending will bring the regular Health History for adults. Personal camping equipment must be provided by the student (see standard list on page 3). Opportunity will be provided for Local Council staff meetings. This is a real chance to get a lot of good information that will help make the 1938 camping season effective.

Every possible Camp Staff member should attend this course. Council Camp Chairmen are also invited.





PACK SADDLE TRIP

In the Rockies

August 7-14, 1938



If you have never followed a mountain trail thru silent pine and fir forests and along tumbling creeks leading up to timberline, if you have never stopped to rest in a flower-carpeted little alpine meadow at a crystal lake reflecting a majestic snow-capped peak; if you have never slept under the trees in high places miles from civilization where the canopy of the heavens is crowded with stars, and if you never had the thrill of casting a fly for rainbow trout in a mountain stream, you haven't experienced the acme of what the great outdoors has to offer. This summer, again, just such an opportunity is being offered a limited number of Scouts and Scouters of Region Ten.

Region Ten, with the cooperation of the Yellowstone Valley Council, will conduct a Pack Saddle Trip into the mountain peaks, trout streams, lakes and trails of the Gallatin Range of the Rockies, August 7 to 14.

The Campers will see real mountain country, catch mountain trout, see game and receive instruction in the handling of horses and the elements of packs and hitches.

The guide and horse wranglers will be "the best in the business", and a U. S. Forest Officer will accompany the party. Geo. W. Roskie, Scout Executive of the Yellowstone Valley Council, will personally direct the trip. Mr. Roskie is a 27-year Veteran Scouter with a wealth of camping experience.

Applications of qualified Scouts will be accepted as received at the Region Ten Office up to the limit of the party.

In addition to equipment listed on page 3, each Scout should bring 1 shelter half to go with your buddy's and one pair Levi's (blue overalls without bib).

REQUIREMENTS: A boy must be at least 15 years of age, and a Star Scout or higher, having merit badges in Camping and Cooking. He must have an approved camping record and a clear registration record, must have the approval of his parents, Scout unit, and Council, must present a standard Scout Health History. A boy must be physically fit for Scout activities at an altitude of 7,000 feet with a riding tip to 10,500 feet, and must be fully up to physical standards for his age. Boys with condition of heart and lungs "good" as specified on the physical examination blank will have no difficulty. Health will be subject to check-up and approval at camp. On arrival at Bozeman, report at Emerson School by 9:30 AM, August 7th.

COST: The total cost of the Pack Saddle Trip including saddle trip and transportation to Base Camp from Bozeman back to Bozeman is only \$17.50 for the seven-day trip. Campers must arrange transportation at their own expense from their homes to Bozeman and return. If this trip is made by automobile, the traveling arrangements must be approved by the Local Council before leaving home. Special low summer rail rates will be in effect. Hitch-hiking will not be approved.



Those desiring more extended camping in the Rockies may contact the Region Ten Office to see if arrangements can be made with some of the Scout Camps in the Yellowstone Area.





EAGLE TRAIL

August 1st to 10th



FOR A NUMBER OF YEARS the Minnesota Department of Forestry has offered specially selected Eagle Scouts of the Region this ten-day camp in the most beautiful of park locations. Scouts spend their mornings building trails to remote points and hitherto impenetrable forest. It is a romantic tho difficult task, and only the most representative Eagle Scouts, able and willing to do their share, are accepted. The trails built have great utility especially for use of foresters in case of fire. It is an outstanding service!

The afternoons are spent in Scouting, exploring, and recreation of many kinds. Scouts selected arrange their own transportation to Hibbing where they will assemble at the Minnesota Forest Service Headquarters not later than 10 AM, Monday morning, August 1st. Here transportation to the camp on Thistledeu Lake will be provided.

Applications must be made to your Local Council Office. Bring your Health History blank with you completely filled out.

QUALIFICATIONS AND REQUIREMENTS:

Minimum Rank - Eagle Scout.

Minimum Age - 15 Years. Maximum Age - 21.

A clear registration record, camping experience, and a leader in Scouting and community life.

Applicants must be industrious, dependable, and willing to work hard as an individual or in a group.

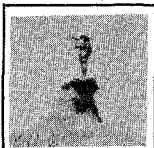
Scouts must agree to arrive on time and stay the duration of the camp.

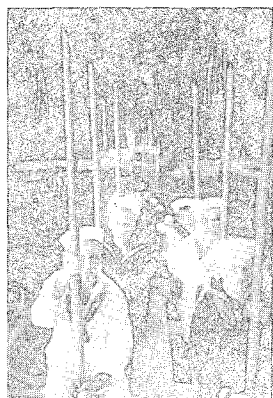
TO COUNCILS:

Councils may select on the basis of two Eagles per thousand Scouts or fraction thereof as of March 31, 1938. Membership up to a total of 78 Eagles. Council Camping Committees, in making the selection, should bear in mind all of the above qualifications and requirements.

"A CAMPING HONOR"

In keeping with traditions of the Region Ten Eagle Scout Trail Camp, it is highly desirable that Scouts selected for the camp should represent the highest ideals of Scouting. It is an honor to be chosen as a member of this Trail Camp. Let us protect this honor. Council Camping Committees should see to it that only the highest type of Scout is selected.





APPLICATION FOR HIGH ADVENTURE OF 1938

Name _____ Age _____ Troop _____

Home Address _____ Tel. No. _____ Date _____

SCOUT OR SCOUTER'S RECORD

Number Merit Badges? _____ Swimming Merit Badge _____ Cooking Merit Badge _____

Camping Experience _____

Scout Rank _____ Are you subject to poison ivy infection? _____

-0-0-0-

Please register me for the following checked Adventure:

CANOE TRIPS

Trip One, July 10-16.....☐
Trip Two, July 17-23.....☐
Trip Three, July 24-30.....☐
Trip Four, July 31-Aug. 6.....☐
Trip Five, August 7-13.....☐
Trip Six, August 14-20.....☐
Trip Seven, August 21-27.....☐
Trip Eight, August 28-Sept. 3.....☐

SO. DAK. STATE FAIR

September 10-17.....☐

MINN. STATE FAIR

September 3-10.....☐

PACK SADDLE TRIP

August 7-14.....☐

UNIVERSITY OF SCOUTING

July 24-31.....☐

EAGLE SCOUT TRAIL BUILDING CAMP

August 1-10.....☐

SEA SCOUT CRUISE

August 15-21.....☐

SEA SCOUT RENDEZVOUS

June 18-19.....☐

AQUATIC SCHOOL

June 15-25.....☐

CAMP SCHOOL

May 28-30.....☐

-0-0-0-

(FOR CANOE TRIPS ONLY)

Special School Bus transportation Twin Cities to Ely. ☐
I would be interested in the bus trip offered.

-0-0-0-

TROOP AND COUNCIL APPROVAL

The above applicant has been approved by his Troop and Local Council.

Signed _____ Signed _____
Scout Executive or Camp Chairman Troop Committee Chairman or SM.

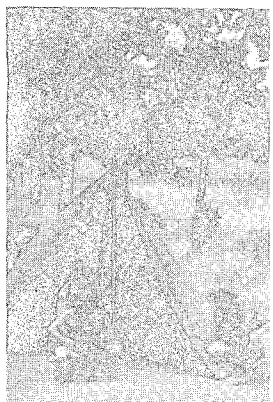
-0-0-0-

PARENTS' APPROVAL FOR SCOUTS

We, the parents or guardians of the above named Scout have acquainted ourselves with the Region Ten Projects thru the information sent out by your office, and thru our Council Office. We recognize that every precaution will be taken for the safety and protection of those going on trips and therefore we assume responsibility for our son's attendance. To assist further in his proper protection, we agree to assume full responsibility for any necessary medical attention in his behalf other than First Aid.

Signed _____

- TEAR OUT AND MAIL -





ITASCA UNIVERSITY OF SCOUTING

July 24-31, 1938

WHAT: The University of Minnesota and Region Ten, Boy Scouts of America, offer this opportunity to Scout Councils to train men in Scout Leadership methods under expert instructors, ideal conditions, and beautiful surroundings. The courses are designed to train men to be administrators, officers, and instructors in Local Council training courses.

Each man completing courses at Itasca will not only understand the principles of troop operation but will also be prepared to serve as an administrator or instructor in similar courses in his own Council's training program for Scout leaders.

WHERE: Minnesota School of Forestry, Itasca Park.

WHEN: It is important that all Scouters arrive in time to start attendance at first session at 8:30 AM, Sunday morning, July 24th. Accommodations will be ready with the evening meal, Saturday, July 23rd. All are expected to remain until after the graduation ceremonies, Saturday, July 30th.

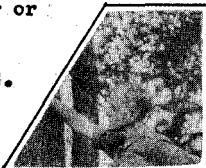


HOW: Scouters furnish their own transportation to and from the School. Information can be furnished by the Region Ten Office on various facilities available at the Park for Scouters desiring to bring their families - resorts, camping grounds, etc. July 24th, all roads lead to Itasca. If by train, buy a ticket to Park Rapids, Minn., and then take a bus to Douglas Lodge, Itasca Park. If by bus, secure a ticket to Douglas Lodge, Itasca Park. On arrival at Douglas Lodge, consult the Lodge clerk for information on how to get to the School.

COST: Total cost including the registration fee to the University of Minnesota will be \$15.00

WHO: The Local Council has a wonderful opportunity to secure training for its leaders and committeemen - an opportunity that should not be overlooked this year of all years when Scouting is expected to make such remarkable strides in membership, training, organization, and enrichment of program. Troop committees, District Committees, lodges, churches, and clubs may wish to send an outstanding Scouter or likely young man, eighteen years of age or over.

PLEASE NOTE: All of those interested should write K.C. Bentz, 1124 Minn. Bldg., St. Paul, Minn. for a very instructive, complete book on the many advantages of the Itasca University of Scouting.





SOMETHING NEW!

Region Ten Sea Scout Rendezvous

The first Annual Sea Scout Rendezvous will be held at Camp Wawatossa, Lake Minnetonka, June 18 and 19, 1938.

We would like to have all Ships of the Region come for a get-together so they may get acquainted in a neighborly way and to participate in boating, swimming, and Sea Scouting skills.

LEADERSHIP: The Regional Flagship SSS #33 of Minneapolis is to be host. Skipper Kyle Cudworth will be Skipper of the Rendezvous.

A registration fee of \$1.00 will be charged each Ship.

TWO PLANS FOR MESS:

Plan One - Ships who wish may bring their food and cooking equipment and serve mess entirely on their own. Commissary arrangements will be made so that fresh commodities such as eggs, milk, etc., may be secured if ordered in advance.

Plan Two - Will be Jamboree style. Cooked food will be issued to each Ship to be carried back to each individual Ship's camp for serving, for which a fee of \$1.75 per person will be charged (four meals).

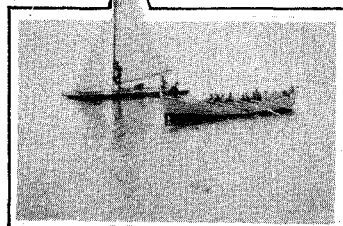
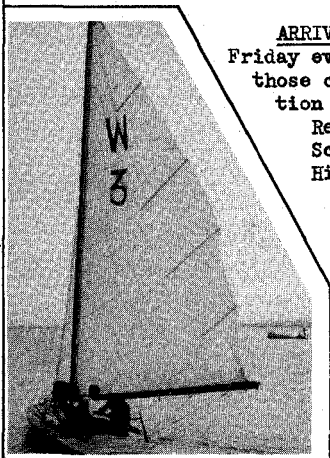
With either method, the \$1.00 fee for each Ship will be charged.

SMALL CRAFT: Each Ship will be expected to bring its own small craft if it can make arrangements to do so. A fleet of all kinds of boating equipment is being recruited for use at the Rendezvous.

TRANSPORTATION: Transportation is to be taken care of by each Ship, and committeemen assisting with this service may stay and enjoy the fun and privileges of the Rendezvous.

Church services will be available to all.

ARRIVAL TIME: Ship wishing to do so may arrive on Friday evening, June 17. This may be an advantage to those coming from a distance. The official registration time will be Saturday, June 18, at 9 AM. The Rendezvous will close afternoon Sunday. Each Sea Scout and Scouter is to bring the regular Health History.





1938 REGIONAL CRUISE

The Regional Sea Scout Cruise has now made itself a tradition. Scouts have found in the Cruises of the past "High Adventure" on big water and small, on Lake Superior, on Eagle Lake, along the St. Louis River, Duluth Harbor, and all of its shipping, and trip on Lake Superior and along the south shore.

WHEN: Starts Sunday, August 14th, with the signing of the Ship's papers at 4 PM. This will allow ample time for all to arrive from the whole Region. And we'll close 10:30 AM, Sunday, August 21st, immediately following the chapel services.

WHERE: Sea Scouts and Sea Scouters are to assemble at the Oatka Boat Club grounds on Park Point at Duluth. Here the Ship will be organized.

COST: The fee for the Cruise will be \$12.00 which is the total expense to the Sea Scouts and Sea Scouters exclusive of transportation to and from the Cruise at Park Point, Duluth.

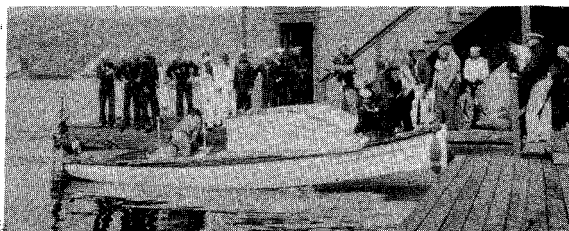
LEADERSHIP: The 1938 Cruise is to be conducted by the Regional Sea Scout Commodore, R. A. Dunning, of Duluth. Regional Portmaster will be C. R. Griffin of Minneapolis Area Council. In addition two Skippers, two Mates, a Quartermaster, two Engineers, and two Pilots are to be recruited.

REQUIREMENTS: Each Sea Scout and Sea Scouter must file the application attached to this booklet and forward to the Region Ten Office, 1124 Minnesota Building, St. Paul. Only forty can be accommodated.

A Health History must be brought to the muster on August 14th.

EQUIPMENT: In addition to the list on page 3 - Pea Jacket, Sea Scout Hat, Sea Bag, Suit of blues or whites, Sea Scout Manual.

QUOTAS: One delegate to the Cruise for each unit of Sea Scouts registered in the Council on June 30th.





BOY SCOUT MERIT BADGE EXHIBIT

Minnesota State Fair - September 3rd to 10th
South Dakota State Fair - September 10th to 17th



Scouts of Minnesota and South Dakota will have the chance to show the educational values of the Scouting Program as well as their crafts and skills at State Fairs this year. Conditions will be similar to those of past years. Booth space will be approximately 8' x 8' square. One table and one chair will be furnished as standard booth equipment. Each Troop will be responsible for decoration, exhibit material, and active display, and will take care of its own expense. Councils having territory in either state will be allowed to send exhibits from three Troops. Applications must be in early. Each Fair is limited to thirty exhibits. Suitable trophies will be awarded for the five best booths.

CAMPING FACILITIES: The Fair managements have set aside a suitable camping spot, away from the general traffic. Water and fuel are available. Troop must bring all its own equipment for camping out.

GENERAL RULES:

1. Participation in Minnesota State Fair - Councils having Minnesota territory. Participation in South Dakota State Fair - Councils having South Dakota territory.
2. Final entries must be made on Merit Badge Exhibit Blank and filed by the Council Executive. Entries close August 15th.
3. In case a Council does not use all of its opportunity in entering 3 booths, additional booths may be allotted to those desiring more.
4. Booths must be in place at 8 AM, Saturday, Sept. 3, for Minnesota; Sept. 10 for So. Dak., and be transported and placed personally by those in charge.
5. Each booth must be under the supervision of one leader and at least four registered competent Scouts. At least one of the Scouts must be at the exhibit in demonstration during all the time that the exhibit is open.
6. The Exhibit will be under the supervision of a Director at all times. All delegations to the Exhibit will be subject to rules and discipline to be developed by this Director. Every effort will be made to protect individual exhibits. However, neither the Fair nor the Boy Scouts will be responsible for loss of or injury to the material.
7. Judging of the Merit Badge booths will be made the opening day.
8. The five booths, the best and most complete according to the judges, will each be awarded a fine trophy.
9. Each delegation will be responsible for its own personal equipment, supplies and meals, and its own Troop Camp.
10. For additional information and application blanks, write or see Kenneth G. Bentz, Regional Executive, 1124 Minnesota Bldg., St. Paul, Minn.

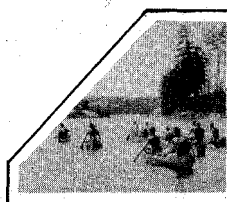
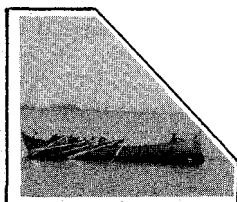
Councils should pick Merit Badge Subjects closely allied to their major industries, and to agriculture.



SCOUTING IN REGION TEN OFFERS

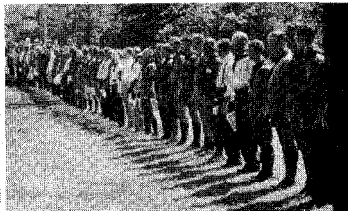
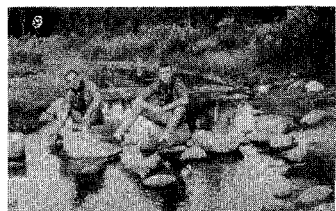
Scout Councils of Region Ten offer over fifty different Camp Properties for boy use this summer. The Adventure Program of a Scout should begin at one of these camps. It is there that he is trained for HIGH ADVENTURE on more advanced trips. Below we provide a list of the base camps of Region Ten Councils. All camps cannot be listed because of lack of space. Write or call any of the Camp Offices listed, or communicate with Kenneth G. Bentz Regional Executive, 1124 Minnesota Bldg., St. Paul, Minn.

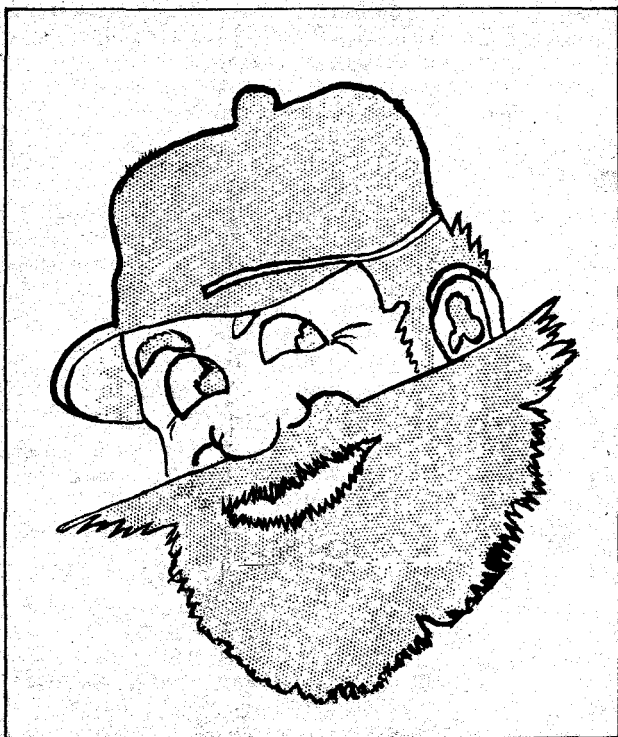
<u>Council</u>	<u>Camp</u>	<u>Camp Executive</u>
Cedar Valley Albert Lea, Minn.	"Cedar Point" Fairmont, Minn. "Everett Hormel" Waseca, Minn.	Ben Conger Albert Lea, Minn.
Minnesota Valley Mankato, Minn.	"Patterson" Madison Lake, Minn.	W. G. Fulton Mankato, Minn.
North Star Duluth, Minn.	"Lawrie"- "Williamson" Cromwell, Minn.	Harry Bartelt 402 Welfare Bldg. Duluth
So. Cent. Minn. Faribault, Minn.	"Pahuca" Prior Lake, Minn.	J. A. Peterson Faribault, Minn.
Minneapolis Area	"Tonkawa" N.Arm, Minnetonka "Wawatosso" Mound, Minn. "Isle of Pines" Bay Lake, Deerwood, Minn. "Manomin" Fridley, Minn. "Lake Sylvia" Cokato, Minn. "Nest Lake" Spicer, Minn.	John L. Tilden 334 Citizens Aid Bldg. Minneapolis, Minn. Geo. R. Boardman Chief Camp Director
Headwaters Hibbing, Minn.	"Wichingen" Hibbing, Minn.	A. Mattioli Hibbing, Minn.
St. Paul Area	"Neibel" Balsam Lake, Minn. "St. Croix" Stillwater, Minn.	E. H. Bakken 204 Wilder Bldg. St. Paul, Minn.
Central Minnesota St. Cloud, Minn.	"Nawakwa" Big Skunk Lake, Avon, Minn.	John D. Wiggins St. Cloud, Minn.



OVER FIFTY CAMPS THIS SUMMER

Council	Camp	Camp Executive
Gamehaven Area Rochester, Minn.	"Kahler" Rochester, Minn.	Paul O. Netland Rochester, Minn.
Yellowstone Valley Billings, Montana	"Glenwood" Glendive, Mont. "Whitetail" Miles City, Mont. "Beartooth" Red Lodge, Mont. "Hyalite" Bozeman, Mont.	Geo. W. Roskie Billings, Montana
Red River Valley Fargo, No. Dak.	"Camp Rokiwan" Jamestown, N. Dak. "Shawondasse" Detroit Lakes, Minn. "Grand Rapids" Grand Rapids, N. Dak.	H. C. Gilbert Fargo, No. Dak.
Lake Agassiz Grand Forks, N. Dak.	"Camp Kiwanis" Devils Lake, N. Dak.	P. S. DeJong Grand Forks, N. Dak.
Great Plains Minot, N. Dak.	"Metigoshe" Bottineau, N. Dak. "Spanish Point" Williston, N. Dak.	M. M. Ammerman Minot, No. Dak.
Missouri Valley Bismarck, N. Dak.	"Chan Owapi" Wildwood Lake near Washburn, N. Dak.	
Gitchie Gumee Superior, Wisc.	"Camp Fidelity" Annicon Lake, Wisc.	
Cent. So. Dak. Huron, S. Dak.	"Camp Dakotah" Miller, S. Dak.	Ed McArdle Huron, So. Dak.
Black Hills Rapid City, S. Dak.	"Old Broadaxe" Nemo, S. Dak.	Melvin Munger Rapid City, So. Dak.
Arrowhead Watertown, S. Dak.	"Camp Arrowhead" Big Stone Lake, S. Dak.	C. D. Rollins Watertown, So. Dak.
Sioux Sioux Falls, S. Dak.	"Jim River" Mitchell, S. Dak. "Lake Shetek" Currie, Minn.	Lee Harbottle Sioux Falls, S. Dak.





BOY SCOUTS OF AMERICA

NORTH DAKOTA MINNESOTA
WESTERN WISCONSIN N. E. WYOMING
SOUTH DAKOTA EASTERN MONTANA

REGION TEN

1124 Minnesota Bldg.
St. Paul, Minn.

CHAS. L. SOMMERS
St. Paul
Chairman

FRANK A. BEAN
Minneapolis
Vice Chairman