



REFLECTIONS



NORTHERN TIER NATIONAL HIGH ADVENTURE

Honorary Charter Certificate Presented

The certificate denoting Dorothy Molter as an Honorary Charter member of the Sommers Alumni Association was presented to Steve Molter and Bea Brophey. Steve is Dorothy's nephew who spent many summers on Knife Lake in the 1960's. Bea Brophey is the chairperson of the Dorothy Molter Memorial Foundation board of directors. The following are excerpts from their letter to the alumni association:

'Without the support of special people like (the members of) the "CHARLES L. SOMMERS ALUMNI ASSOCIATION, INC." the museum could not reach their goals in keeping Dorothy's spirit alive.'

'Jim Mack, from the United States Canoe Association wrote a quote concerning Dorothy:

'AS WE CONTINUE TO REMEMBER DOROTHY

AND KEEP HER SPIRIT ALIVE, IT IS OUR HOPE THAT WE ALL DEDICATE A PIECE OF OUR LIVES TO LIVE AS DOROTHY DID, IN HARMONY WITH THE ENVIRONMENT, WITH GREAT DIGNITY, COURAGE, HELPING MANKIND, AND MAKING A SIGNIFICANT CONTRIBUTION TOWARD A BETTER WORLD.' "

'Thank you for bestowing

the "HONORARY CHARTER MEMBER OF THE CHARLES L. SOMMERS ALUMNI ASSOCIATION" title upon Dorothy and her memory. Please express our gratitude to your Association. The plaque will be placed on the interior door of the Winter Cabin for all who enter to see.'

The Dorothy Molter Memorial Museum is located near the east end of Ely on MN Hwy. 169.



(Above) Alumni director Butch Diesslin presents certificate to Bea Brophey, Dorothy Molter Memorial Foundation director. (Right) Mike Foresman, Ely mayor, unveils wood statue of Dorothy Molter at the Dorothy Molter Memorial Museum.



Tidbits On The Sommers Clan

Don "Tex" Curry ('60-61) helped organize a contingent to the Base from Ft. Worth, TX, where he is an oil and gas producer and a lawyer. He says he is coming back with a crew in 1995 or 1996.

Ian Griffiths (1985) is hoping to come to the base from Rumney, Cardiff, U.K to assist with the 1994-95 OKPIK program.

Esther (Mrs. Cliff) Hanson sends her regards to all - along with a standing invite to those who venture to Medford, Oregon.

Dr. Richard L. "Dick" Hill ('50-'57) recently retired from his position as professor of education administration at the University of North Dakota.

Dick, his family, friends and associates also recently created the Dr. Richard L. Hill Scholarship Endowment within the UND Foundation.

Dave Ingebrigtsen ('71-73) is a Wildlife Specialist with the DNR in Grand Marais, MN.

Mark Ingebrigtsen ('72-'74) is a Sales Representative in Fridley, MN.

Eric Sapir ('67-70) is a Insurance Agent in Englewood, CO.

David Trombold ('70-'72) recently started Trombold Environmental Management consulting business in Valley Center, KS, so he and his family will miss their annual vacation in the Ely area.

Plans for Annual Giving Campaign Unveiled

At the annual Directors meeting in February 1993 it was agreed that an "annual giving campaign" should be developed to provide additional sources of revenue for various SAA programs. The feeling was that many members might want to make contributions over and above their Charter Life Membership or annual dues. During the past year the

board has discussed and refined the idea and the final program is now in place. "Crossing Portages" is a five-year planned giving program with four tiers to provide a level for any budget. Those who participate will receive recognition for their generosity. More details to follow in the weeks ahead.

"CROSSING PORTAGES" ANNUAL GIVING CAMPAIGN

Portage Crossed	Gift	Payment Schedule (5 yrs.)	
		yearly	quarterly
Grand Portage	\$2,500.00	500.00	125.00
Horse Portage	1,000.00	200.00	50.00
Meadows Portage	500.00	100.00	25.00
Prarie Portage	200.00	40.00	10.00

Alumni Association Directors and Officers

Director/President (2)*	Dave Hyink	(206) 863-6406
Director/Secretary (2)	Butch Diesslin	(218) 365-6904
Director (2)	Roy Conradi	(404) 496-0920
Director (1)	Zane Beaton	(612) 861-4930
Director (1)	John Christiansen	(417) 646-8214
Director/Vice Pres. (1)	Barry K. Bain	(612) 944-5178
Director (3)	Lorri Hanson	(503) 744-2814
Director (3)	Jay Walne	(901) 278-2633
Director (3)	Dave Greenlee	(605) 371-2209
Treasurer	Nigel Cooper	(612) 738-1242

*Number in parentheses is years remaining in current term

Program Liaisons

Mr. Bill Spice	National Director of High Adventure Philmont Scout Ranch, BSA Cimarron, NM 88714 (505) 376-2281
Mr. Sandy Bridges	Director, Northern Tier National High Adventure Program P.O. Box 509 Ely, MN 55731-0509 (218) 365-4811
Mr. Robert La Fortune	Chairman, National High Adventure Committee 427 S. Boston #2104 Tulsa, OK 74103-4132
Mr. Charley Hann	Chairman, Northern Tier National High Adventure Committee 435 Peavey Building 730 Second Ave. So. Minneapolis, MN 55402 (612) 338-9019

Annual Meeting Sept. 4

The 1994 annual meeting of the membership of the Charles L. Sommers Alumni Association, Inc. will be **SUNDAY, SEPTEMBER 4, 1994 at 10:00 A.M.** at the **CHARLES L. SOMMERS NATIONAL HIGH ADVENTURE BASE**, near Ely, MN.

This is the association's annual corporate business

meeting as required by our articles of incorporation and there is no other "program" scheduled. The next reunion/meeting will be in 1995. All association members are welcome to attend. Proxy statements for the meeting will be sent to the regular members of the association in early August.

Staff Training Done by Committee Members

The 1994 training for the Northern Tier High Adventure staff was designed and done by members of the **Northern Tier National High Adventure Committee** a.k.a. the Canoe Base Committee.

Committee members participating were **Alan Batterman, Bob Christie, Butch Diesslin, Mike Holdgrafer** and, **Dr. Richard Shank**. Mike accepted the responsibility of coordinating the training week and then recruited "volunteers."

The staff training covered: BSA Policies, U.S. and Canadian regulations, cooking and trail food, trail equipment, trip planning, flora and fauna, fishing, minimum impact camping, woodsmanship, first aid and emergency procedures, swimming and swamping, teaching canoeing and portaging, youth protection, geology and archeology and weather observation. Following the in-class training the interpreters took a short training trip for some field experience.

The members of the committee were asked take over the staff training to provide continuity from year to year — besides its a shame to waste all

of the expertise accumulated within the committee members. The committee members will be developing a loose-leafed training manual. The committee also hopes to involve members of the alumni association in the staff training process in the future.

To give the staff a change of pace from the formal training

one afternoon was spent with award winning photographer and artist Jim Brandenberg, artist and author Howard Sivertson, and artist and author Bob Cary. Jim talked about his photography work and answered questions about the photography in his books, *The White Wolf* and *Brother Wolf* in particular. Howard

talked about growing up on Isle Royale and his researching for his new book, *The Illustrated Voyageur*. Bob shared his down-to-earth wisdom with the staff. All three autographed copies of their books for the staff members. This session was reminiscent to me of the times spent with Sig Olson back in the 1960's.

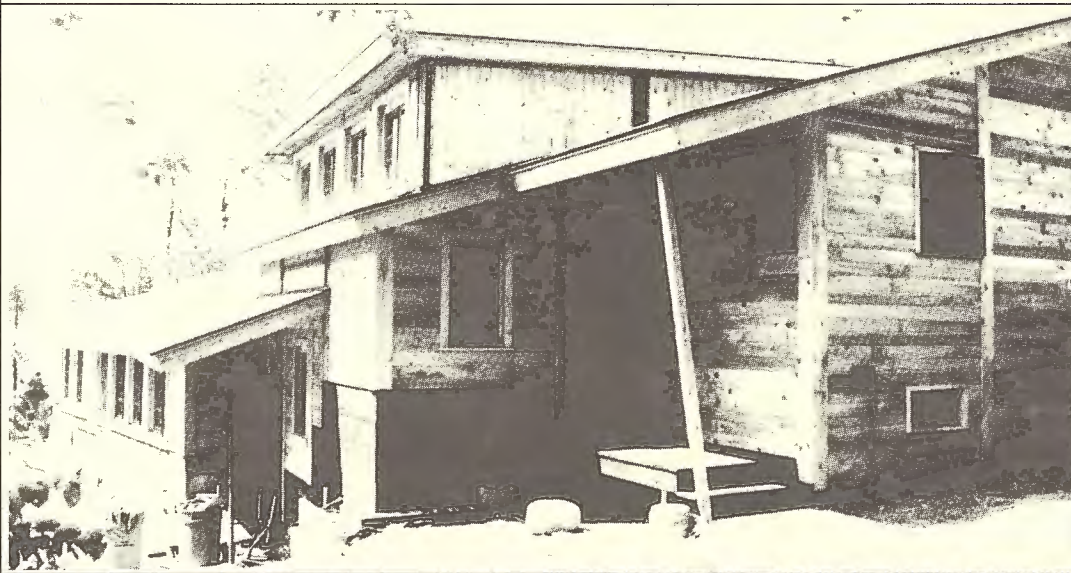


Northern Tier committee member Bob Christie teaches firebuilding.



Bob Christie shows firebuilding techniques.

Base Administrative Office Nears Completion



1995 Reunion Plans Set

Dave Greenlee, Dave Sitzer, Mark Nordstrom, Ray Mattson, and Roy Cerny comprise the Planning and Organizing Committee for the next Sommers Alumni Reunion, September 2-4, 1995. Put these dates on your calendar now, and send any ideas you have for them to SAA, P.O. Box 428, Ely, MN 155731.



President's Message

As I write this, it's early July and I'm in the final stages of preparation for a 10-day Quetico trip in mid-August. Like all such trips, this one is special. Unlike most trips in my experience (with the possible exception of Grand Portage in '67 and Hudson Bay in '69), this one is unique because it's a one-way trip! Sommers alumni member **Wade Herbranson** and I will be accompanying two crews from Troop 300 in Centralia, WA on trips from Atikokan to Ely, and Ely to Atikokan respectively. We're testing this concept as a potential solution to increasing Northern Tier program access and participation, without substantially impacting key resources on the U.S. side and at the Ely base. If successful, this concept would: (1) channel program growth to the Atikokan base, (2) have virtually no impact on the number of BWCAW permits required, (3) have no incremental impact on the facilities at the Ely base, (4) have little to no impact on staff and equipment logistics (since staff and equipment between bases is simply exchanged), and (5) offer senior staff and/or

alumni the opportunity to "guide" some very exciting trips - not to mention offering our "scouting customers" a tremendous wilderness experience! Watch the next issue of *Reflections* and we'll give you a full report. or better yet, come to the September 4, 1994 SM Annual Meeting at the Ely base and we'll tell you all about it.

On the agenda for the September 4 meeting will be a proposal to increase the number of SM directors. With increases in the number of Alumni Association projects comes the need for additional leadership to ensure their successful completion. We are particularly interested in representation by members with pre-1960's and post-1970's tenure at Sommers—although we have a place for anyone who thrives on hard work, is committed to the Base and its programs, and seeks a high level of personal satisfaction by helping others. Come to think of it . . . that describes everyone of you that I know. Let's hear from you.



Signs at Base Honor Parley Tuttle & Oren Felton



PARLEY'S ROCK
A PLACE FOR MEDITATION,
WORSHIP & WILDERNESS APPRECIATION



**FELTON'S
LANDING**

Message from Sandy

The 71st year of operation has come to a close. A great year, weather was much better than the past couple of years, and thanks to the staff and participants, another safe year. We had BSA International Staff participants from Finland and Ireland. Virpi Lamminpaa, Mikko's wife, was a real delight, she had first been here on a trip some six years ago. Terro, another staff member from Finland, reminded us so much of Jussi Lyly, that Cherie and I dubbed him "Little Jussi." David, the staff member from Ireland, was a fine staff member as well.

We had a group from Siberia, staffed by alumni member Randy Schwalbach. Two visitors from the Czech Republic, and a group from

Puerto Rico. So, all-in-all, a very "International" year.

The new administration office is almost complete. It is quite a credit to all those that were involved, including: Parvin Bishop, Chuck Buenger, Bill Spice, Architect Don Melander, and the builders. The general contractor was Dick Hall. Dick had Bob Olivia, Jenny Hall and Jon Eng all working on the project.

The new outfitting building is about to be started at Ely. The electrical power is almost installed at Atikokan.

Great program opportunities for 1995—By the way we already have over 400 crews signed up!

We need good staff, please keep us in mind. The best to each of you—see you in 1995.

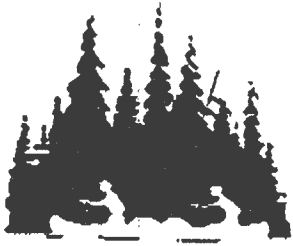
Final BWCAW Plan Passed by Forest Service

On Tuesday, July 19, U.S. Forest Service Regional Forester, Floyd Marita reviewed the major elements of the Final BWCAW Management Plan. Acting upon several appeals (and subsequent interventions) to the August 1993 Plan, Marita revised only the limit on the maximum number of watercraft per party—increasing it from three to four.

The SAA intervened on behalf of twelve appellants on this point, citing both safety and trip flexibility concerns, and using 1992 U.S. Forest Service BWCAW visitor use data to show that the incremental impacts of such a change on the wilderness resource would be imperceptible.

Some provisions in the new

plan include: (1) reducing maximum party size from ten to nine persons, (2) restricting the maximum number of watercraft per party to four (previously unrestricted), (3) reducing the number of overnight paddle permits from 382 to 280 per day, (4) reducing the number of overnight motor-use permits from 2,561 to 1,976 per year, (5) reducing the number of day-use motor permits from 10,169 to 7,902 per year, and (6) decreasing the number of campsites from 2,039 to 2,000. In addition, BWCAW day-users will now be required to obtain permits. Overnight permit quotas went into effect this summer. The remainder of the changes will become effective in 1995.



Charles L.
Sommers Alumni Association, Inc.

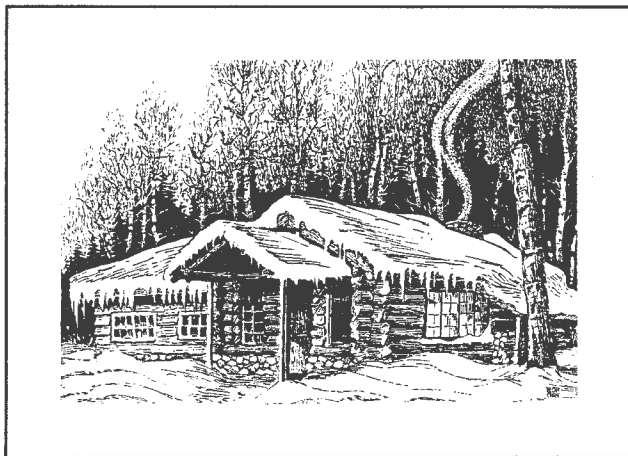
P.O. Box 428 Ely, MN 55731-0428

1994 SAA Holiday Greeting Card Sale

Charles L. Sommers Alumni Association is now taking orders for the 1994 edition of our annual Holiday Greeting Cards. Through the use of these cards, SAA members and supporters have the opportunity to send holiday greetings to their friends, business associates, and fellow scouts, and to send a message of their commitment to programs of Northern Tier High Adventure, BSA. Orders will be shipped beginning in early November.

This year's card will feature a Bob Cary drawing of "Hanson House", with highest quality thermography printing on premium cards made of recycled paper. The large windows on the right side will be colored pale yellow, projecting an image of warmth within. The inside message is HOLIDAY GREETINGS. The back of the card carries a message about Northern Tier High Adventure. This is a distinctive and very handsome greeting card. The cards come 25 per package including envelopes.

A limited number of last year's cards featuring the "Lodge" are also available at a discounted price, while supplies last.



The person sending this card has contributed to Sommers Alumni Association's efforts to promote character development and outdoor skills through wilderness canoeing programs at Northern Tier National High Adventure, BSA.

Charles L. Sommers Alumni Association, Inc., Box 428, Ely, MN 55731
A Non-Profit Organization

"THE LODGE"
Original Art by Bob Cary

 cut here and mail

CHARLES L. SOMMERS ALUMNI ASSOCIATION, INC.
 Holiday Greeting Card Sale
 P.O. Box 428, Ely, MN 55731

Quantity		
_____	1994 Cards - Hanson House	x \$25.00 = _____
_____	1994 Cards - Hanson House (no inside message)	x \$25.00 = _____
_____	1993 Cards - The Lodge	x \$20.00 = _____
_____	Shipping: FREE	TOTAL _____
_____	Please send a SAA Membership Application.	

Ship To:

Wilderness Experiences Last A Lifetime

by Dave Greenlee

I was eleven years old when my father first took me on a canoe trip to the Quetico. Dad learned about the "wilderness experience" as a scoutmaster and advisor on canoe trips through the Sommers Canoe Base near Ely, Minnesota. His colorful stories about canoe trips in the Quetico had already planted the seeds in my head. Whatever expectations I had as a young boy were far surpassed by the actual experiences of paddling, portaging, and living in the woods. Thirty four years and dozens of canoe trips after that first time, I remain totally infatuated by the experience.

After the first couple of canoe trips with my family, I hit the trail as a scout on an adventurous trek through the canoe base. When I was old enough, I applied for a job and was fortunate enough to get it, to be first trained as a guide and then allowed to share my experience with five or six crews each summer. The ten day trips we took were demanding but very rewarding. We learned to develop a special attitude that allowed us to enjoy the good times and to rise in the face of adversity. Along the way there was a canoe trip to Hudson Bay, the forming of lifelong friendships, and many quiet moments in the woods. I've been a "Charlie Guide" ever since. I know that my life has been greatly affected and forever changed by these experiences that began in my childhood.

When my own children were barely out of diapers, we began an annual pilgrimage to the northwoods. I now realize that they nurture their own seeds. As they chase their dreams and work through the confusing

passages of childhood and young adulthood, each has memories of quality times we have spent together. I think they know more about themselves as a result of their wilderness experiences. Tad, Chet, and Meghan are about as different as three people can be, but each feels a quiet pride in their ability to function in the woods. The pride that they feel may give them an inner strength that they can draw from in the future.

For each of us, the experience is different. It is also deeply personal. I recall a time when my own feelings seemed so profound and so private that I made no attempt to share them. I feared that to voice them would somehow change and cheapen their meaning. Lately, I have tried writing essays for a local canoe club newsletter. I have also enjoyed the writings of others, including Sig Olson and Bill Mason. Sometimes writings trigger memories and feelings for me. In fact, it happened just today.

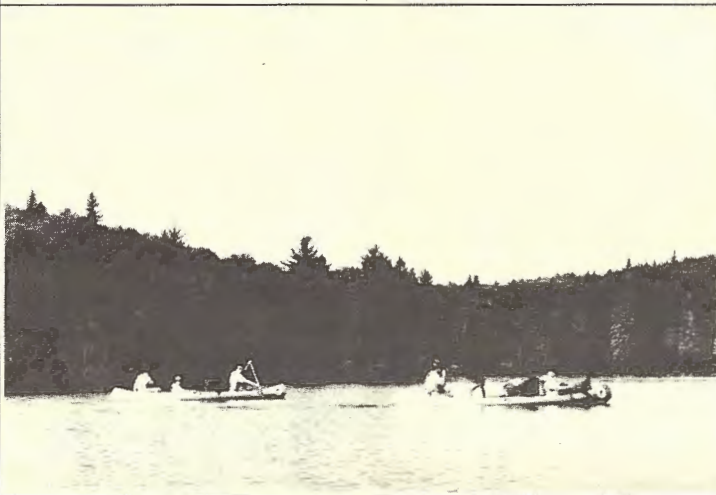
It is early on a Saturday morning. I have picked up the latest issue of the *Boundary Waters Journal*, and read an article by Bob Cary. Bob lives just down the lake from the canoe base, and he has written a humorous account of winters in the northwoods that I find nostalgic and entertaining. Scanning the rest of the magazine, my eye is drawn to the picture of a fellow, paddling a canoe laden with gear. He is obviously on a wilderness trip. Near the man is the sleeping form of a little girl, a toddler who is cuddled up contentedly amongst the packs. I recall some fond memories of

my own daughter as a toddler, sleeping for hours at a time as the canoe gently rocks her to dreamland. The picture elicits warm memories that I dwell on.

As I read the caption, I begin to cry. It reads, "Someday, your kids will wake up and realize that a love for the out-

doors is the most precious thing you can give them." As the tears flow, I know that my feelings are not just about the remembering of Meghan's naps.

Today I have wakened to a new realization of the precious gift that my father has given to me. Thank you, Dad.



'94 Greeting Cards Feature Hansen House

Back by popular demand! 1993 Greeting Card Sales went very well, and due to the popularity we are planning for our second annual card sale. This year's Greeting Card will feature a winter scene in pen and ink of Hansen House, with artwork by Bob Cary. Also, as last year, there will be a message on the back about SAA.

These cards are of highest quality and suitable for mailing

to business associates, friends, and fellow scouters. By using SAA Holiday Greeting Cards the sender is relaying a message about his commitment to scouting and Northern Tier Programs.

The price is \$25.00 for 25 cards and envelopes, and includes shipping. Send orders or inquiries to SAA, P.O. Box 428, Ely, MN 55731.



"LOST ALUMNI"

The Alumni Association does not know the current status or whereabouts of the following former Sommers staff members. We would appreciate knowing if they are still alive and their current address.

AASEN DOUG 1968-69
 ADDY ERVIN 1966
 AKINS DON 1968
 ANDERSON SCOTT 1975
 ARMIN DAVE 1963
 BABCOCK JOHN 1966
 BACHMAN JIM 1963
 BAILEY BRUCE 1970
 BAKER ROBERT 1986
 BANKS BOB 1977
 BANKS MARNA 1977
 BARTON ROB 1966
 BASSING TIM 1975
 BELL GREG 1975
 BELL LEN 1961
 BENTSON NELS 1968
 BESKE JIM 1961
 BIRDSONG L. WESLEY
 1967-69
 BISHOP ERIC 1980
 BLACK SCOTT 1963
 BLAIR SCOTT 1977
 BLAUSER DOUG 1970
 BOEBEL CHUCK 1958
 BOLAY ROD 1971-73
 BORN VERNON 1968
 BOWLIN STAN 1975
 BRASHEARES BRUCE
 1963
 BRAUCHER CHUCK 1979
 BROWN DERWIN 1956
 BUSKA BILL 1968-69
 CARLEY CURT 1961
 CARLSON L. MONTY
 1955-56
 CARROLL BARRY 1986
 CHRISTENSEN ODIN
 1966
 COLLINS HUGH 1970
 COLLINS JED 1966
 CONAWAY BILL 1980-81
 CONKLIN ROBERT 1956
 COTE BILL 1975
 COURTEAU TIM 1970
 COX CONRAD 1955
 CRARY CHUCK 1975-76
 CRAWFORD JOHN 1966
 CROSS STEVE 1975
 CUCHNA DENNIS 1976
 CUMMINS MICHAEL
 1975

CURRY BUZZ 1966
 CZUPKA CINDY 1977
 DAHL MIKE 1968-69
 DAVIS W. TODD &
 KATHY 1987-88
 DEUCHENE DENNIS 1963
 DODD J. DOUGLAS 1969
 DOMIMICAK CURT 1980
 DOOLITTLE DICK 1956
 DOTSON DENNIS 1963
 DUETSCHER CRAIG 1956
 DUNNIGAN DENNIS 1963
 DURKEE PHIL 1960
 EARL DENNIS 1980
 EARLE PETER 1963
 ELSE KATHY 1975
 ETCHESON STEVE 1966
 EVANS VINCENT 1968-70
 FAGO CLIFF 1955
 FLANAGAN SEAN 1987-88
 FLINSCH F. MICHAEL
 1956
 FLUTY BRENT 1989-90
 FOWLER KIM 1984
 FOX RICK 1987
 FRIEDL PAT 1976
 FRITZMEIER BOB 1966
 GALLANT JOHN 1975-78
 GARLITZ MARK 1977-78
 GARLITZ RICK 1975
 GARRIOTT CHARLIE
 1968-69
 GIBBS OWEN 1967-70
 GIBSON TERRY 1963
 GILCHRIST JOHN 1961-62
 GILL BILL 1966
 GILLESPIE KIM 1976
 GILSDORF JOHN 1955
 GOEBEL JILL 1977
 GOODMAN SCOTT 1983
 GOSSMAN BILL 1970
 GRABOW PAUL 1975-76
 GRANSKOW DAVID 1956
 GRAY BILL 1968-69
 GRIBBLE KATHY 1978-79
 GRIFFITH MARK 1986-87
 GROTH HAYDEN 1969-70
 GRUNER BOB 1975
 GUTTORMSEN JOEL
 1972-73
 GUTTORMSEN JUDY
 1973
 HABICHT DAVE MN 1970
 HAMILTON JACKIE 1975
 HANSON DAN 1971-73
 HARRISON MATT 1980
 HEDENBERG JACK
 1986-88
 HEISE WARREN 1956
 HELLEDY JOHN 1956

HENDRICKS ED 1956
 HENNING TIM 1986
 HEPNER W. SANDY
 1969-70
 HERMAN BOB 1969
 HERTHER TERRY 1955-56
 HEVERLY MICHAEL 1955
 HIGDON SAMUEL 1956
 HILDE HAL 1970-71
 HILEMAN DOUG 1977
 HILL NICHOLAS 1956
 HOFFBECK CHAD 1956
 HOLM DICK 1966
 HOWE JIM 1975
 HUGHES CHRIS 1975
 HULLAR TIMOTHY 1987
 HUTCHINSON JOHN 1975
 ISACKSON RON 1966
 JAMES STEVE 1978
 JANSSEN WILLIS 1970
 JOHNSON BRUCE 1966
 JOHNSON JON 1970
 JOHNSON MARK 1970
 JOHNSON PAUL 1955-56
 JONES BOB W. 1975-76
 JONES P. WAYNE 1956
 JUSSILA IIRO 1979
 KARCH RICK 1975-76
 KEATING KELLY 1975
 KEETON DAVID 1978
 KELLER PAUL 1984
 KERSCHBAUM JOHN
 1976
 KERSEY JOHN 1956
 KILMER DAVID 1969
 KING JOHN 1966
 KING TIM 1968
 KLINE JIM 1970
 KLUSMAN JIM 1966
 KNIGHT GIL 1968
 KNOUSE CHUCK 1970
 KOCH ED 1966
 KOELKER TIMOTHY
 KORTZ JIM 1970
 KRAFT PAUL 1970
 KURT WAYNE 1975
 LADUKE KERRY 1966
 LAH GEORGE
 LAMBIRTH JIM 1975
 LAMON BRIAN 1975
 LANDON JOHN 1966
 LANGUELL BOB 1975
 LAPLANTE BILL
 LEGGATE WARREN 1963
 LEHMBERG PAUL 1966
 LEHMBERG TOM 1966
 LEWIS WAYNE 1966
 LIEN PETER 1976
 LIKELY JAMES
 LITTLE CHRIS 1969

LUDMAN DON 1966
 MANTELL BOB 1980
 MARTIN DAVE 1970
 MATHESON JEFF 1970
 MATTSOON DICK 1970
 MENGES WILLIAM 1969
 MICKELSON THOR 1976
 MILLARD STEVE 1964
 MILLER ROBERT 1968
 MILLER TOM KS 1966
 MONSON LYNN 1975
 MOORE BILL 1966
 MORTON FRED 1963
 MOSES BRAD 1966
 MULLER KURT
 MYERS JOHN 1970
 McCLARY ROBB 1966
 McCORMICK CAMERON
 McCOY BETH 1976
 McCULLOCH JIM 1963
 McCURRY PAUL 1969
 McDANIEL BRIAN 1986
 McDANIEL JIM 1959-62
 McDANIEL TERRY 1965
 McEWEN PETE 1966-70
 McREE BRAD 1979
 McKinney DALE 1975
 McKinney KENNY 1975
 McMAHON MIKE 1964-66
 McNEIL ROBERT 1955
 McPHAIL REED 1978-80
 NACHTSHEIM DAVE 1966
 NEISSE BRUCE 1966
 NEISSE DARRYL 1966
 NELLIS DON 1978-80
 NELSON STEVE 1956
 NEVILLE PAUL 1981
 NEWTON BoB 1975
 NIELSEN HENRIK 1979
 NOVAK JAMES 1984-85
 NUCHOLS JOHN 1956
 OLMARA MIKE 1970
 OLESON DAVE 19 86 - 89
 OLSEN CHRISTIAN 1986
 OLSEN JEFREN 1978-79
 OLSON DAVE 1966
 OULD LEE 1964-66
 PAUL ETHAN 1975-76
 PAULSON CHARLIE 1976
 PAYNE BRIAN 1975
 PEEKE DICK 1964
 PEHLER MIKE 1967-69
 PERRINS PAUL 1980
 PERSON ALAN 1963
 PETERSON KENNETH
 1968-69
 PETERSON ROBERT 1969
 PICKENS JOEL 1966
 PIO JOHN 1982-84
 PLOCH DOUG 1983-84

POOLE GARY 1963
 POTTS RONALD 1956
 PRICE BLAKE 1978
 PUTNAM JOHN 1956-61
 QUINN TOM 1979-80
 RABENOLD MARK 1980
 RACHEY PAUL 1970
 RAHM BRUCE 1956
 RALPH GREGORY 1985-86
 RAUSCH DOUG 1975-76
 RAWSON HELEN 1988
 REIN ROLAND 1976
 RENNER JIM 1956
 RHYNER KRISTINE 1986
 RINNE SARI 1980
 ROESCHLEIN DOUG 1969
 RUGE KENNETH 1968-69
 RULIFSON DENNIS 1956
 SARGEANT JIM 1966
 SAWINSKI MIKE 1970
 SAYLER CHESTER 1956
 SCHMIDT CLAUDIA 1990
 SCHUELLER STEVE
 1983-84
 SEITZ NIEL 1963

SELBY MARK 1964
 SERRAULT DAVID 1975-76
 SHARON DANIEL 1986
 SHARP JEROUX 1961
 SHEFFIELD PHIL 1975
 SHEIRE BLAIR 1966
 SIKES MIKE 1969
 SIMINGTON KEN 1975-76
 SIMMONS BILL 1970
 SITZER BRENT 1976-77
 SITZER ED 1955
 SLAUGHTER SCOTT
 1968-69
 SMITH AL 1970
 SMITH L. TOM 1963
 SMITH MIKE 1964
 SMITH STEVE 1970
 SOPER DUANE 1963
 SPAULDING WILLIAM
 1969-70
 SPENCER PETE 1975-76
 SPINK CRAIG 1975
 SPROAT DAVID 1968-69
 SPROUT JERRY 1975
 STALEY ROBERT 1955-56

STRICKLAND JACOB 1964
 STROBUSH DENNIS 1985
 STRUCK BOB 1981
 STUEMPERT BUD 1977
 SWAILS MARK 1969-
 SWANSON DAVID 1975
 SWANSON HALE 1956
 SWANSON JOHN 1954-56,
 62
 SWARD RIC 1970
 TABLER ALAN 1978
 TATMAN PETE 1963-66
 TELFORD CLAIR 1968
 THOE JAMES 1955
 THOMPSON DANNY 1975
 TIERNEY RICHARD 1956
 TURMAN RICH 1975
 VASEY STEVE 1979
 VOKATY DWIGHT 1966
 VOWLES JEREMR 1991
 WAGNER STEVE 1984
 WALL DON 1970
 WARREN BRAD 1975
 WARREN MICHAEL
 1968-69

WATERS BROWNING
 1968-69
 WEATHERSTONE SCOTT
 1986-88
 WEISSINGER RON 1970
 WERMAGER MARC
 1962-64
 WEYER GARX 1978
 WHIPPS JOHN 1969
 WHISTLER JOHN
 WHISTON DAVID 1969
 WHISTON KEN 1966
 WHITE DAVID 1969
 WHITE ROLLIE 1963
 WIDNEY TOM 1970
 WILBELMSSON
 MICHAEL 1987
 WILLIAMS ANNE 1976
 WILSON JAMES 1968-69
 WINCHELL ROBERT
 1966-69
 WYATT PAUL 1969-70
 ZIMMERMAN ROGER
 1963

Scenes From The Past—1951 Sommers Staff



Left to right: Monty Carlson, Henry Bradlich, Dick Schwieren, Bob Hedrick, Paul Hedin, Gene Felton and Mac Miller.

Dorothy Molter Museum Recreates Paddle Fence

The board of directors of the Dorothy Molter Memorial Museum decided to recreate the 'PADDLE FENCES' that Dorothy had on the "Isle of Pine" on Knife Lake. They also decided to use the paddles in the fence as method to raise money for the museum.

The Molter Memorial Committee decided to allow businesses and groups to purchase a paddle in the fence for \$100 and have their name placed on the paddle. The Sommers Alumni Association has purchased a paddle for the fence.

The fence was officially started with two honorary paddles—one for Sommers

Canoe Base and one for the Voyageur Outward Bound School. These paddles were placed in the fence without charge by the Molter Memorial

committee to commemorate the many years of friendship and support of Dorothy by the groups and staff members from the two organizations. Joe

Mattson and Butch Diesslin were on hand as representatives of Sommers and the Sommers Alumni Association, respectively.



SOMMERS ALUMNI ASSOCIATION
P.O. BOX 428
ELY, MN 55731



NONPROFIT
U.S. POSTAGE
PAID
Ely, MN
PERMIT NO. 102

